

**laboratory
equipments**



walk-in chambers



General Features

- Modular PUF insulated panel construction
- For stability analysis storage (as per ICH or specialized requirements) or media fill and related applications
- Customized sizes ranging from 4500 Ltrs. up-to 80000 Ltrs., and above
- Options of S.S. 304 or S.S. 316 inner and S.S. 304 or powder coated G.I. outer
- Modular FCU within chamber for high uniformity
- Split type condensing unit system
- Humidifier unit with water reservoir (as required)
- Aesthetic door hardware, with lock and key facility
- Self-rescue mechanism, with “human inside” management feature in control system
- Sturdy rack system, with adjustable perforated shelves
- DGU glass view port on door, chamber lighting and test port as standard

Controls & GLP package features

- Advance “i-con” PLC based control system
- Wide range of multi-level alarms, safety back-up and interlock for utility failure, process deviations, user and system operations
- Comprehensive validation and documentation support

Optionals

- Multi-location logger sensors (2, 4, 8, 12, or 16 ch.)
- “KlimaCom” - 21 CFR Part 11 compliant software
- Standby condensing and/or humidifier systems
- Door access controls with password and/or biometric authentication
- Touch screen interfaces in various sizes
- Remote and SMS alarm alerts
- Diagnostic feedback system
- Custom built shelves and material Handling trolleys

stability chambers

General Features

- Double wall PUF insulated construction
- Options of stability (ICH or specialized requirements), photo-stability, and only cooling chambers
- Wide ranging capacity from 165 Ltrs. up-to 2000 Ltrs.
- Options of S.S. 304 or S.S. 316 inner and S.S. 304 or powder coated G.I. outer
- Forced air re-circulation for high uniformity
- Top mount controls, with built-in condensing unit
- Humidifier unit with water reservoir (as required)
- Sturdy door fitting using high quality hinges with lockable door, and Inner perspex door with rigid frame
- Perforated shelves, with adjustable spacing
- Chamber lighting and test port as standard
- Castors for mobility
- Lighting system to comply ICH Q1B requirements (incase of photo-stability chamber)

Controls & GLP package features

- Advance “i-con” PLC based control system
- Wide range of multi-level alarms, safety back-up and interlock for utility failure, process deviations, user and system operations
- Comprehensive validation and documentation support

Optionals

- Multi-location logger sensors (2, 4 or 8 ch.)
- “KlimaCom” - 21 CFR Part 11 compliant software
- Standby condensing and/or humidifier systems
- Door access controls with password and/or biometric authentication
- Touch screen interfaces in various sizes
- Remote and SMS alarm alerts
- Diagnostic feedback system
- Custom built shelves, and full view transparent doors



Incubators



General Features

- Double wall insulated construction
- Options of only heating (+7°C above Amb. to 60°C) and heating + cooling / BOD (+15°C to 60°C) and cooling (+2°C to 8°C)
- Wide ranging capacity from 45 Ltrs. up-to 2000 Ltrs.
- Options of S.S. 304 or S.S. 316 inner and S.S. 304 or powder coated G.I. outer
- Forced air re-circulation for high uniformity
- Top mount controls, with built-in condensing unit
- Sturdy door fitting using high quality hinges and lockable door, and rimless inner perspex door
- Perforated shelves, with adjustable spacing
- Castors for mobility
- Chamber lighting and test port as standard
- Specialized small volume incubator (28 Ltrs. to 90 Ltrs.) for B.I. incubation

Controls & GLP package features

- Advance “i-con” PLC based control system
- Wide range of multi-level alarms, safety back-up and interlocks for utility failure, process deviations, user and system operations
- Comprehensive validation and documentation support

Optionals

- Multi-location logger sensors (2, 4, or 8 ch.)
- “KlimaCom” - 21 CFR Part 11 compliant software
- Standby condensing systems
- Door access controls with password and/or biometric authentication
- Touch screen interfaces in various sizes
- Remote and SMS alarm alerts
- Dual zone (dual door) space saving design
- Customized shelves and material handling containers

Ovens

General Features

- Double wall or triple wall insulated construction
- Options of sterilization, depyrogenation, drying and double door (pass through) ovens
- Operating temperature ranges from +10°C above Amb. up-to 265°C, and above
- Wide ranging capacity from 45 Ltrs. up-to 1500 Ltrs.
- Options of S.S. 304 or S.S. 316 inner and S.S. 304 or powder coated G.I. outer
- Forced air re-circulation for high uniformity
- Top mount control system
- Sturdy door fitting using high quality hinges and door handle
- High temperature silicone door gaskets, with dual gasketing for certain models
- Wire rod shelves, with adjustable spacing
- Specially developed components to provide long life

Controls & GLP package features

- Advance “i-con” PLC based control system - specifically designed sterilization and depyrogenation cycles
- Batch timer/s and Back-up safety thermostats with heater interlock as standard
- Wide range of multi-level alarms, safety back-up and interlock for utility failure, process deviations, user and system operations
- Comprehensive Validation and documentation support

Optionals

- AT PID control system, with direct printer interface
- Multi-location logger sensors (2, 4, or 8 ch.)
- “KlimaCom” - 21 CFR Part 11 compliant software
- Door interlock safety feature
- Touch screen interfaces in various sizes
- Multi segment recipe based sequential control



Muffle furnaces & Vacuum Ovens

⊙ Vacuum Ovens (with all options)

- Double wall insulated construction
- Capacities starting from 15 Ltrs. up-to 180 Ltrs
- Temperature range +7°C above Amb. to 250°C
- Options of S.S. 304 or S.S. 316 inner and S.S. 304 or powder coated G.I. outer
- Heavy leak proof door and inner chamber design with high temperature resistant silicone gaskets
- Easy to use, AT PID controls
- Analogue pressure vacuum gauge, with option for digital electronic readout
- Vacuum release and vacuum charge valves
- Built-in digital timer, process deviation, and overshoot protection devices and alarms
- GLP solution having real time temperature and vacuum recording, huge built-in memory, with direct printer interface



⊙ Muffle furnaces (with all options)

- Double wall insulated construction
- Capacities starting from 5 Ltrs. up-to 150 Ltrs.
- Temperature range +25°C above Amb. to 1200°C
- High quality ceramic muffle interior
- Options of S.S. 304 or Powder coated G.I. outer
- Easy to use, AT PID controls
- Back-up controller with dedicated sensor
- Built-in digital timer, process deviation, and overshoot protection devices and alarms
- GLP solution having real time temperature, huge built-in memory, with direct printer interface

⊙ Dry Baths / Dry Blocks (all models - with its options)

- Industry acclaimed models - express, thermobloc and thermobloc TS series to choose from ...
- Temperature range +7°C above Amb. to 150°C and more
- Unique, high accuracy and uniformity design
- Options of powder coated M.S.C.R. or S.S. 304 outer
- Wide range of capacities for BET and B.I. incubation
- Variety of precision machined, highly conductive, anodized aluminum blocks - to suit multitude of applications
- Built-in digital timer, process deviation, and overshoot protection alarms
- GLP solution having real time temperature recording, huge built-in memory, with direct printer interface
- New ! Touchscreen controls with host of remarkable features
- Comprehensive documentation support available

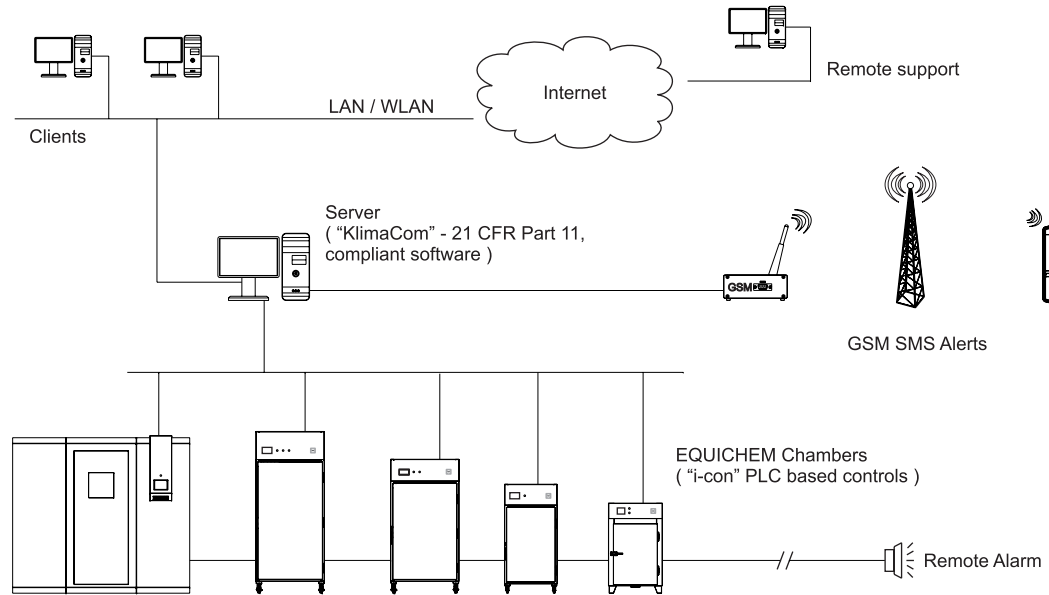


Dry baths and Water baths

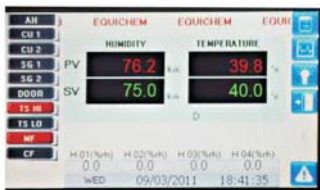
⊙ Water Baths (all models - with its options)

- Wide range of models - serological, evaporating, stirring, circulating, shaking etc. to suit different applications
- Capacities start from 8 Ltrs. up-to 45 Ltrs., and more
- Options of powder coated M.S.C.R. or S.S. 304 outer
- Proven accuracy and uniformity
- Leak resistant S.S. 304 or S.S. 316 bath design ensures high usage life
- Range of accessories - gable, flat, concentric ring lids, perforated bottom base, drain valves, and auto-fill
- Built-in digital timer, process deviation, overshoot protection, and water low level with heater interlock alarms
- Seamless steel or transparent interior options available
- Custom design options available
- Comprehensive documentation support available

- Structured system architecture ensures seamless connectivity between various elements, and ease of use...



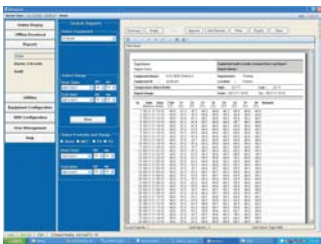
"i-con" control system



Years of listening to various users and knowing their regulatory requirements, has led us to develop the elaborate, yet simple "i-Con" PLC based control system, for our chambers. Thanks to its modular design, easy interfaces, and regulatory compliant features – our chambers provide assured performances, combined with ease to user ...

- Integrated control, multi-location monitoring & recording - PLC based system
- User hierarchy along-with access security features
- Multi-level configurable alerting, and alarms system
- Easy navigation and configuration of multiple parameters, with in-loop system calibration feature
- Built-in memory for data, alarms, and events recording
- Industry standard sensors and transmitters
- Wide range of safety back-up devices and interlocks for utility failure, process deviations, user and system operations
- Unique control logics, for sensor failure, fine tuning of parameters & changeover of standby systems
- High quality components and devices, proper labeling, ferruling and wiring, and documentations along-with on-screen diagnostic features, facilitates ease of maintenance
- Options of back-lit graphic LCD, or touch-screen interfaces of various sizes with graphical trends
- Connectivity to our 21 CFR Part 11 compliant "KlimaCom" software
- Application specific dedicated features, e.g. human safety in Walk-ins, cycle management in photo-stability, ovens etc.

“KlimaCom” software



“Klimacom” with its host of features, user friendly navigation and stringent conformity to 21 CFR Part 11 guidelines, makes it an effortless and powerful tool for user to complete routine tasks of data acquisition and reporting to comply requirement of various international regulatory authorities. Additionally it also offers convenience of true paperless system, remote control of parameters, viewing all data online, and acknowledging alarms, from user's desktop PC

- Multi-tasking and very easy to use
- Multiple chamber connectivity
- Strong user access and management features - hierarchy, password strength, history and ageing etc.
- Multi authority levels, with true paperless reporting
- Remote Online view of all process parameters and alarm with acknowledgement facility
- Completely configurable SMS alert system, with auto reminders and escalation, which respects user shift timings and non-working days
- Comprehensive reporting includes summary, data, and trends types for data. Alarms and events, and audits
- Trend analysis with configurable zoom, and customized plotting controls
- Post processing of reports, for Mkt, Fh, Fd values provided as standard
- Exhaustive non-garbage (filterable) audit trails
- Server Client architecture, with Industry standard database
- No obligation for paid third party licenses to use software
- Intelligent chamber identification and auto configuration
- See through capability for complete chamber control
- Database protection and maintenance feature includes Auto-backup, purge and restore functions
- Data alteration detection to falsify electronic records
- IQ/OQ/PQ protocols available

Documentation and Validation

Documentation

- Pre-requisites of Installation
- Operating Manual comprising critical spare components list, G.A. drawings, electrical diagrams, fault finding, etc.
- Critical component MOC / Test, manufacturing process and Calibration certificates, with traceability to National standards
- DQ
- IQ/OQ/PQ protocols

Validation

- All equipments are 100 % validated as per our internal standards before despatch, to match end user's specific requirements
- On-site validation services are offered using our calibrated test equipments, backed with support of our trained engineers and technicians
- Future re-calibration and re-validation support



Quality proceeds from a fundamental conviction : we must do even better !

EQUICHEM, since its inception in 1977, is one of the leading and innovative manufacturers of products in the field of laboratory instruments and equipments. We have made a major contribution to our products through innovation and investments for research and development.

Our objective is to provide user friendly, reliable and technologically advanced versatile solutions for our end user, for them to improve work efficiency and exceed stringent demands of various international regulatory authorities. To achieve the same, we strongly believe in our man, machine and material values...

EQUICHEM has a team of technically sound marketing persons to understand application requirements, dedicated engineers, who innovately convert concept to reality, and efficient production team, and well trained after sales staff for back-up. Every single component is critical, and is developed and selected considering its reliability, and performance impact. Adapting latest and flexible mass manufacturing process gives us edge to produce equipments confirming to higher standards.

Ever-growing circle of satisfied customers, endorse our above philosophy and efforts

For more solutions and details, contact :

Regd. Office :

EQUICHEM

206 A, CIEM Indl. Estate, Ramchandra Lane Extn., Malad (W). Mumbai 400 064. MH. INDIA

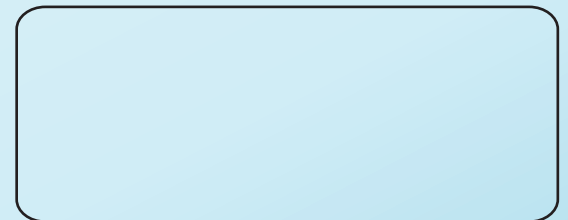
Tel. : +91 22 2880 4912 / 2859 Email : info@equichemindia.com

URL : www.equichemindia.com

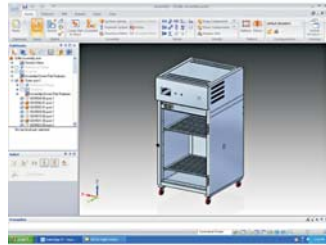
Works :

EQUICHEM

Plot no. 13, Survey no. 825/6, Vill. Mahim. Palghar (W). Thane 401 404. MH. INDIA.



the process of manufacturing



3D CAD design centre



Complete Sheet metal workshop,
with assembly shopfloor for
integration of condensing unit
and other sub-assemblies



Wiring and final assembly



100 % pre-despatch
inspection and validation

support



Pre-sales support

- Selection of chamber capacity, calculation estimate for walk-in chambers
- Selection of appropriate features to suit your specific application and regulatory related requirements
- Suitability of foot-prints of chambers, at your existing locations



After-sales support

- Prompt service, backed through our trained technicians and engineers
- Most components ex-stock
- Annual Maintenance Contracts (AMC) / Annual Service Contracts (ASC) packages, post warranty expiry
- Future re-calibration and validation support
- Existing system up-gradation, retrofitment etc. with new features
- Software up-grades